

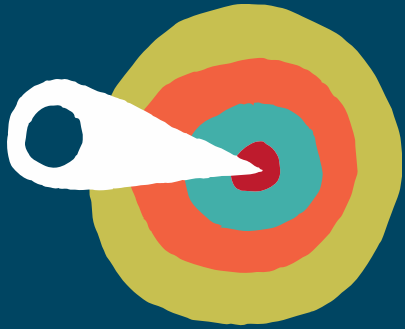
W H I T E
R O S E
F O R E S T
S T R A T E G Y
L E E D S

2020



WHITE ROSE
FOREST





Ambition to plant more trees in Leeds working with partners. To increase woodland and tree cover from 17% to 33% by 2050



Strategy defines:

- Where we're going to plant,
- What resources we have and need,
- Why we're doing it,
- What we need to consider when designing woodlands
- Who's going to pay for it,
- How and Who are we going to tell,
- What we do Next



OUR VISION

'We want to create a genuinely sustainable, well wooded landscape which will benefit the people, economy and wildlife of Leeds - increasing canopy cover from 17% to 33% by 2050'

W H I T E R O S E F O R E S T S T R A T E G Y L E E D S

2020

BENEFITS:



WRF in Leeds will contribute to the White Rose and Northern Forests

BY 2030: Tree and woodland planting in the district to be increased by **1500 hectares** including the planting of **500 hectares** by the council offsetting **26,000 tonnes** of carbon emissions



THE COUNCIL WILL WORK WITH:

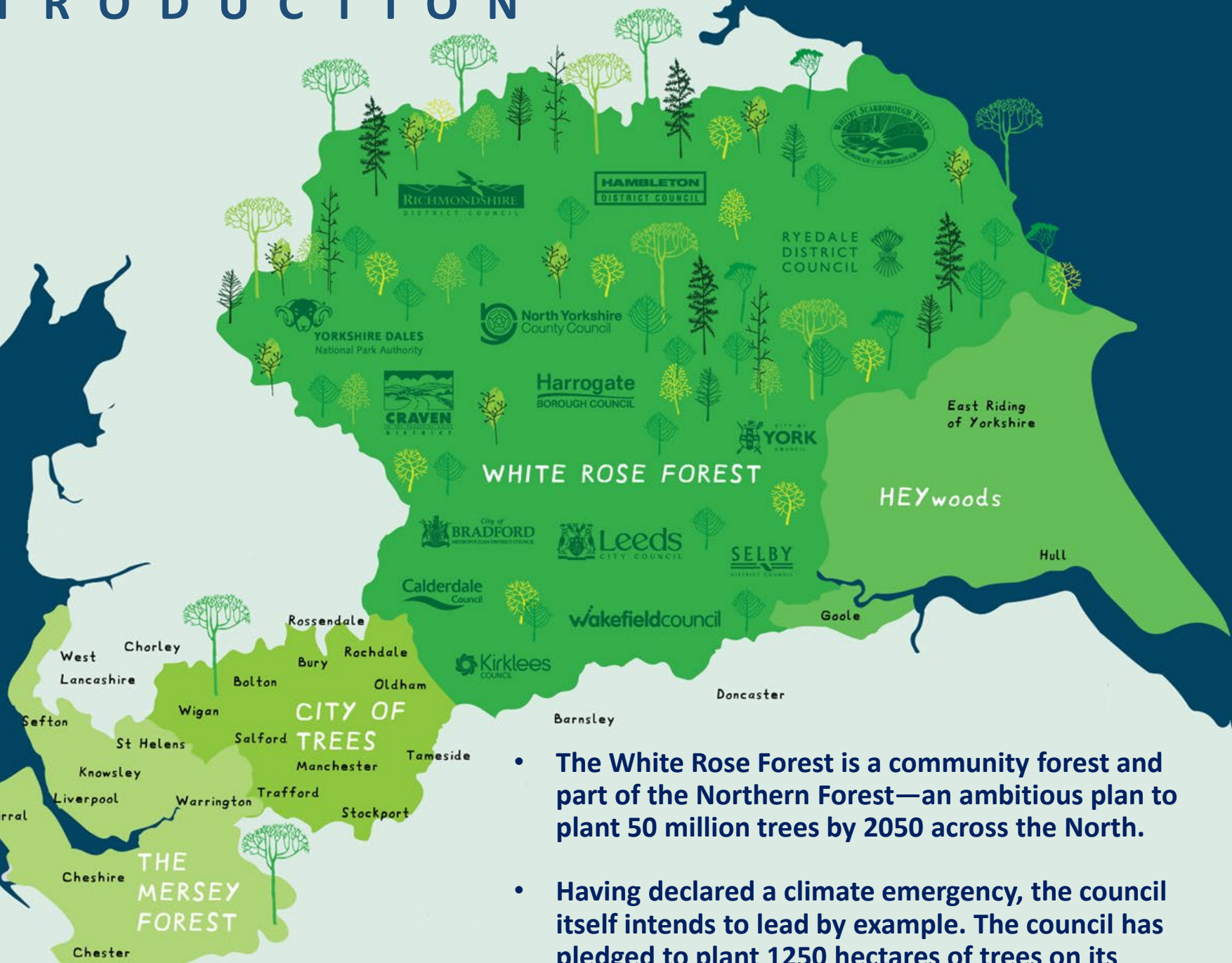


HOW WE WILL ACHIEVE THIS:

1. Coordinate the planning, design and planting of trees in Leeds 🌳
2. Identify areas to plant trees 🗺️ 🚗 🏠 🌳 🌳 🌳
3. Promote the WRF and the importance of trees to all 🌳 🌳 🌳 🌳
4. Protect existing trees through planning, development and engagement 🗺️ 🏠 🌳
5. Secure and signpost to funding and donation opportunities 🌳 🌳 🌳 🌳
6. Research better methods of planning and planting 🌳 🌳
7. Collect data to monitor progress 🗺️ 📊 🌳 🌳



INTRODUCTION



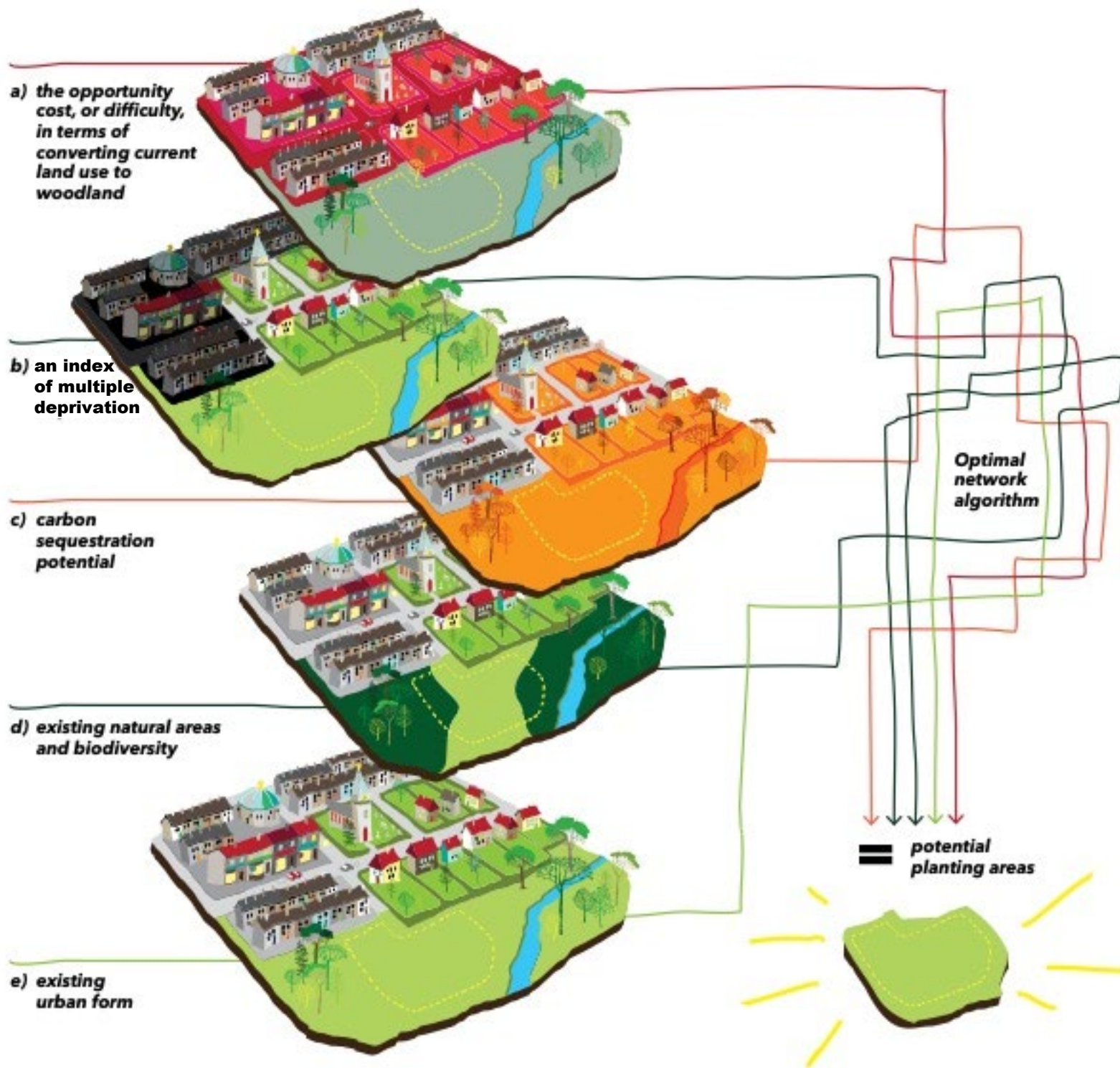
- The White Rose Forest is a community forest and part of the Northern Forest—an ambitious plan to plant 50 million trees by 2050 across the North.
- Having declared a climate emergency, the council itself intends to lead by example. The council has pledged to plant 1250 hectares of trees on its own land by 2050.

WHERE ARE WE GOING TO PLANT?

- In a lot of cases land owners will choose their own areas to plant
- In other cases the Council will receive funding from donations, developments and define where this should go or target planting

- Next slides define the influences on where
- Also defines constraints on a broad and small scale



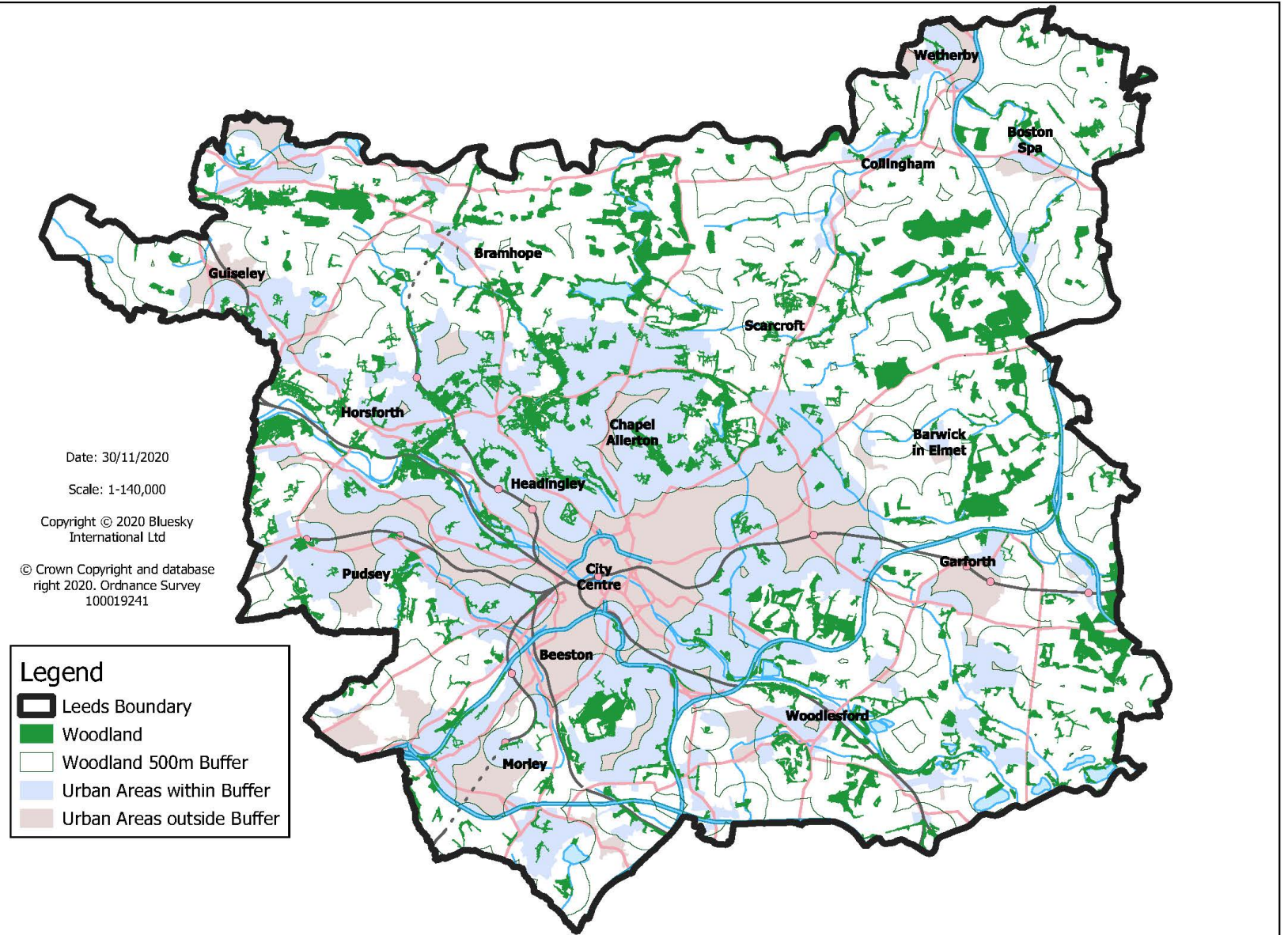


WHERE ARE WE GOING TO PLANT?

- Systematic Conservation Planning Tool – Combination of factors used to define potential woodland planting areas to give a network of sites in an ideal world setting.
- On council land – Through Woodland Creation Project
- <https://www.theariumleeds.co.uk/woodland-creation>
- On private land
- In rural and urban areas
- In areas to reduce flooding risk

WHERE ARE WE GOING TO PLANT?

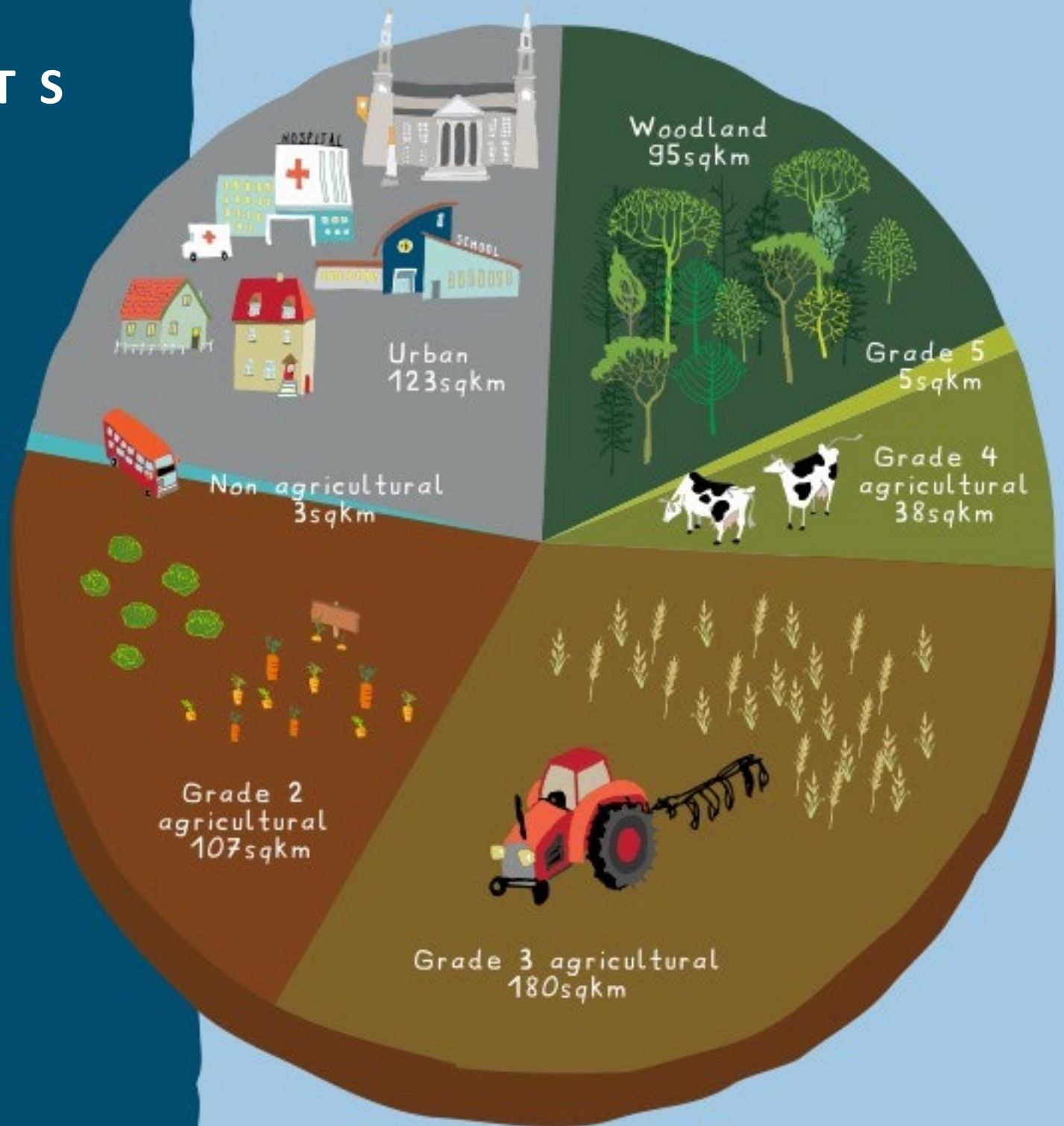
- LCC. Core Strategy Policy G2:
- Filling the gaps to ensure all residents have access to woodland within 500 metres of their homes
- Getting the community to identify potential sites in their areas with help from the Council
- In areas with low canopy cover
- On development and regeneration sites
- To connect areas of nature to make a network



Map including privately owned woodland in development

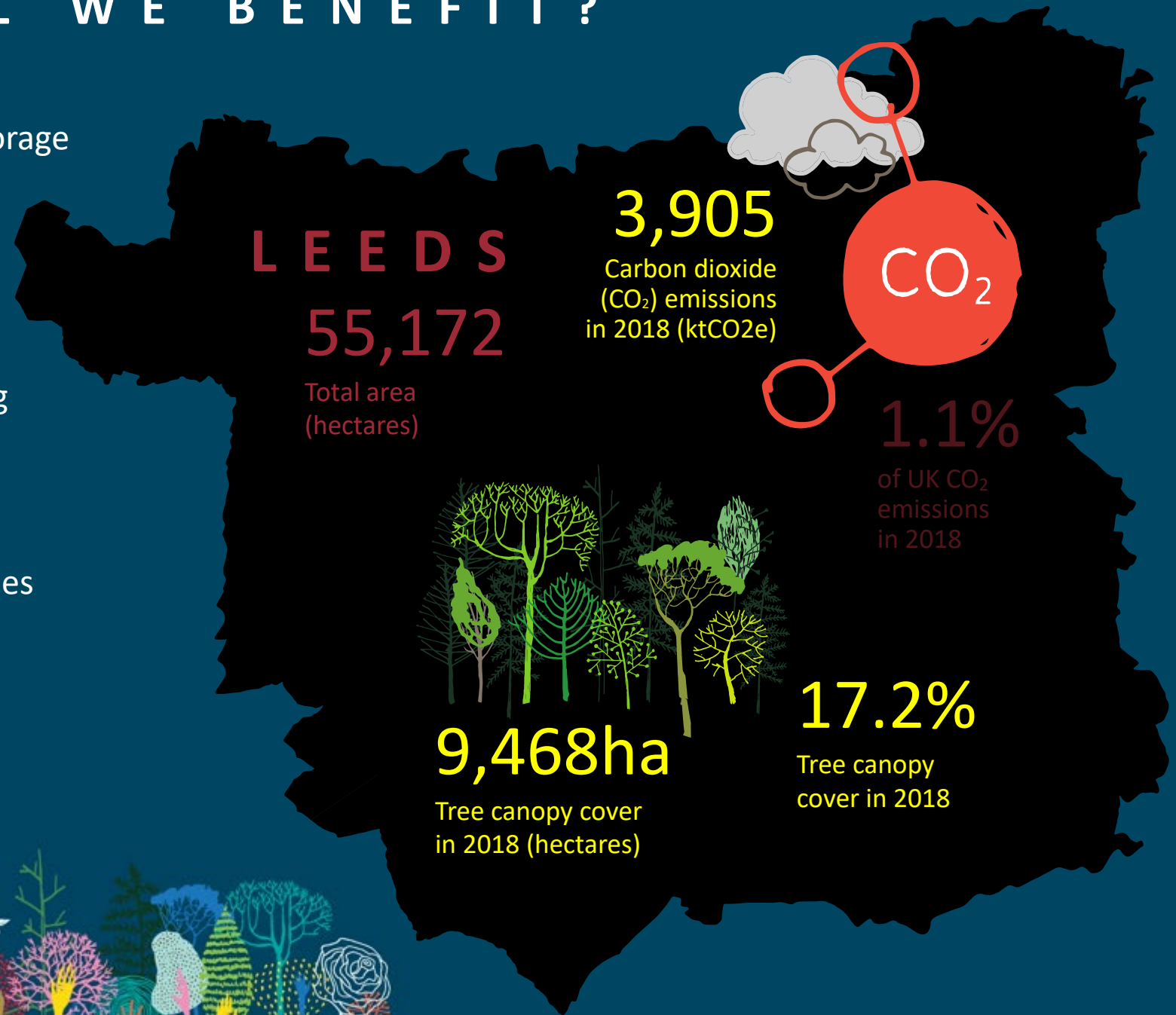
CONSTRAINTS

- Land Ownership
- Availability and Quality of Land
- Competing Land Uses
- Funds to offset loss of income
- Legal
- Major infrastructure projects
- Attitudes to tree planting
- Maintenance
- Limited resources



HOW WILL WE BENEFIT?

- Carbon capture and storage
- Improve biodiversity
- Mental and physical health
- Attracting and retaining business investment
- Flood alleviation
- Land and property values increase
- Recreation
- Urban cooling



T R E E P R O T E C T I O N



LEGISLATION

- Tree preservation orders
- National Planning Policy Framework
- Forestry Act 2010
- Agriculture and Environment Bills

COUNCIL PROTECTION

- Management of TPOs
- Core Strategy Policies G1-4
- Negotiation with developers
- Development Control

TREE FELLING

- Dead, dying or dangerous trees
- Reduce liability for landowners incl Council
- Development need
- Woodland management / income

MAINTENANCE AND MANAGEMENT

- Establishment
- Weed free area around trees
- Management of woodland planting



RESOURCES AND DELIVERY

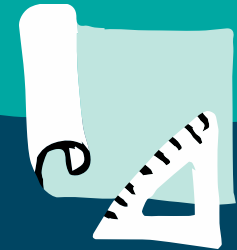
Existing Council Resources

- Forestry Team
- Maintenance
- Community Engagement
- Business Sponsorship
- Education
- Rangers
- Management Of Tree Preservation Orders
- Planning Policy
- Development Control
- Highways Trees
- Legal advice regarding land issues



Proposed Resources

- White Rose Forest Joint Venture Resources
- Funding assistance
- Communications



WHAT HELP DO WE NEED?

- Land to plant
- Donations
- Volunteers
- Support to develop funding applications
- Community engagement



FUNDING

White Rose Forest Funders Group

Trees 4 Climate Funding

Trees for Yorkshire

Corporate funding

Donations

Environmental Land Management Scheme
– From 2025



WOODLAND PLANTING DESIGN

- Use established best practice
- Maintenance of new trees until established – single trees and as part of woodland planting
- Compliance with UK Forestry Standard (UKFS)
- Avoiding diseases by careful species selection

- Carbon based tree planting strategy – species choice
- Adhere to Green Streets® design principles
- Landscapes for Water
- Creating woodland through re - wilding
- Accessibility
- Food production



HOW ARE WE GOING TO ENGAGE AND COMMUNICATE?

Website Development



WRF Joint Venture Comms Team

Landowner Engagement –

Through trade press, parish councils, National Farmers Union, Country Landowners Association, councillors



Tree Wardens
– arranging local groups to care for trees, carry out planting



Business Engagement
– social media, network meetings

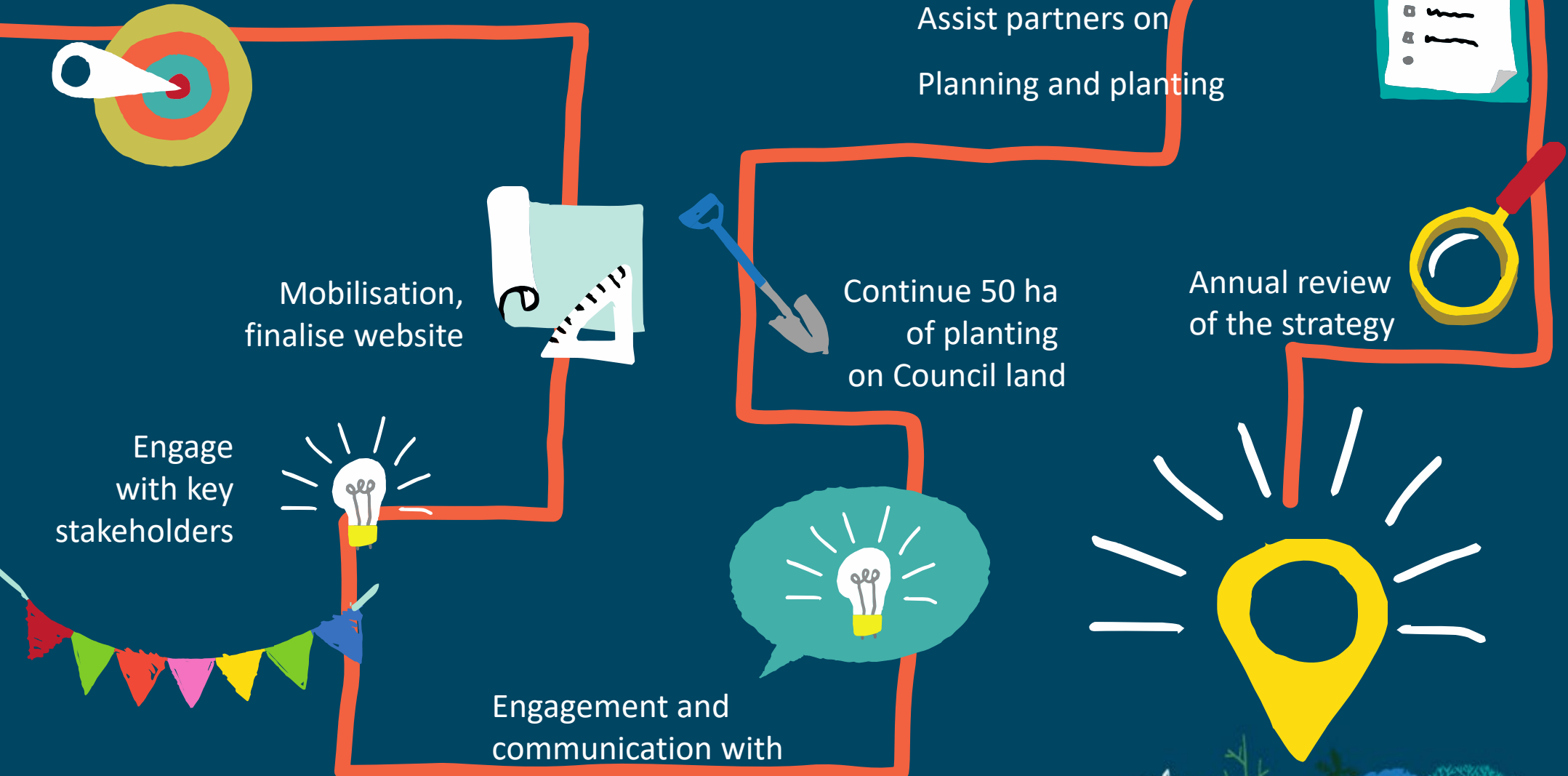


Community engagement
Councillors, – existing networks, Faith Groups, Social media



LCC Executive Board

December 2020



Engage with key stakeholders

Mobilisation, finalise website

Continue 50 ha of planting on Council land

Assist partners on Planning and planting

Annual review of the strategy

Monitoring

Engagement and communication with business, landowners community, institutions



WHAT DO YOU THINK?

Thank You!

- What support can you offer?
- How can we help you to plant trees?
- Do you have any land for tree planting?
- Do you want to get involved?
- Contact WRF@leeds.gov.uk

